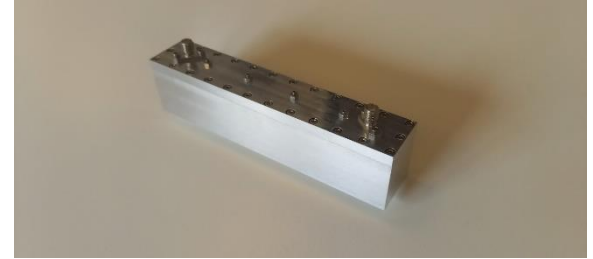


## Electrical specifications

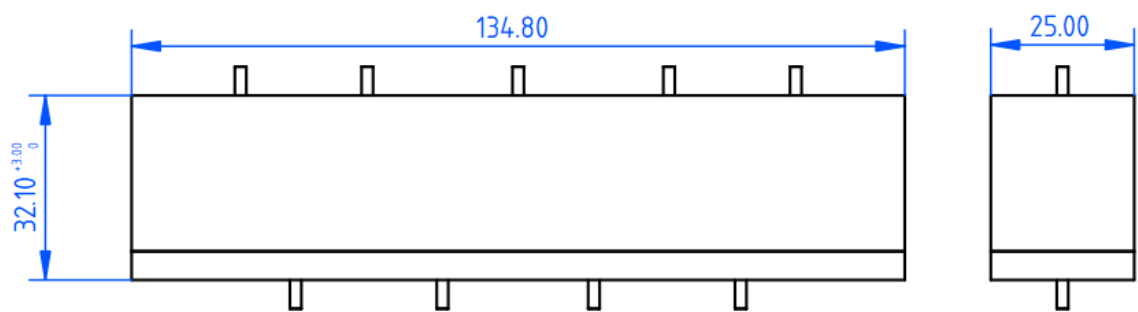
Technology	Machined	
Frequency ( $f_0$ )	3.5	[GHz]
Bandwidth	400	[MHz]
Insertion Loss	$\leq 0.7$	[dB]
Return Loss	$\leq -15$	[dB]
Rejected band ( $f_L$ )	[DC – 3.1]	[GHz]
Rejection (Low)	-50	[dB]
Rejected band ( $f_H$ )	[3.9 – 9.6]	[GHz]
Rejection (High)	-50	[dB]
Impedance	50	[ $\Omega$ ]
Connector	SMA – F	–



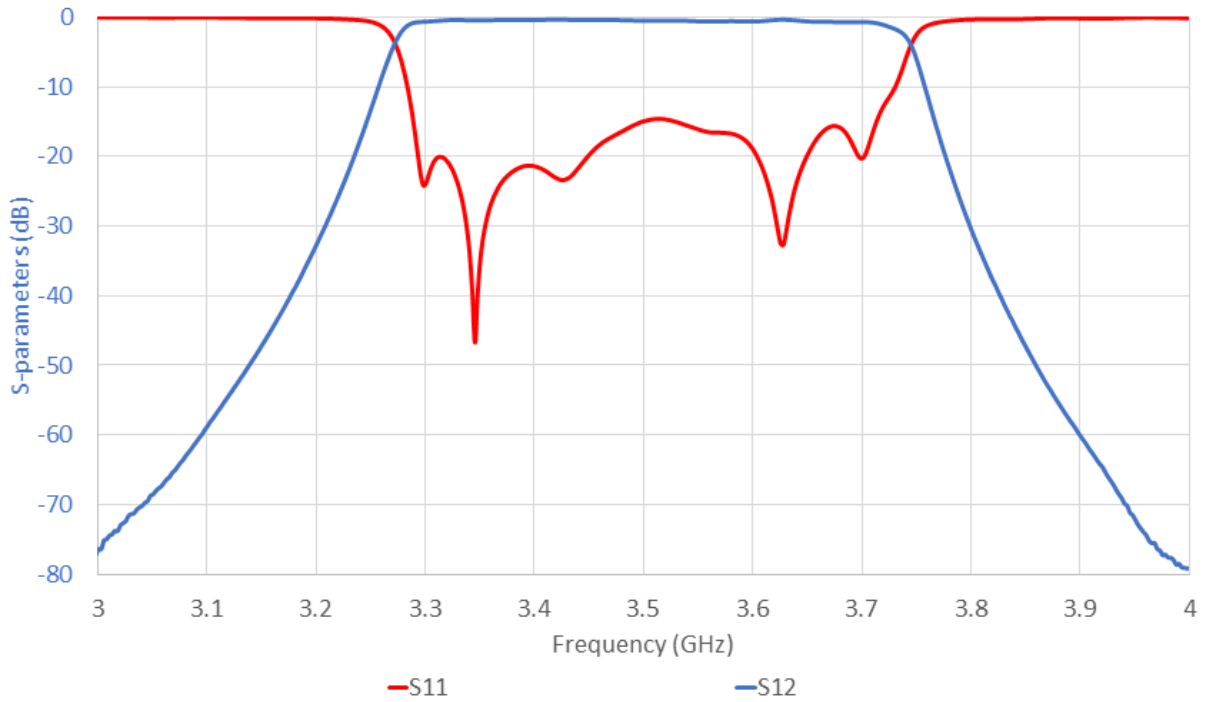
## Physical specifications

W x L x H	32.1 x 134.8 x 25	[mm <sup>3</sup> ]
Weight	190	[g]

## Technical Drawing



### In Band Response



### Out Of Band Response

