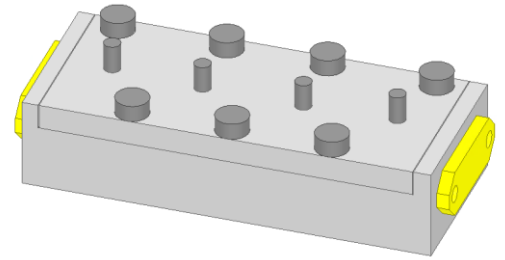


Electrical specifications

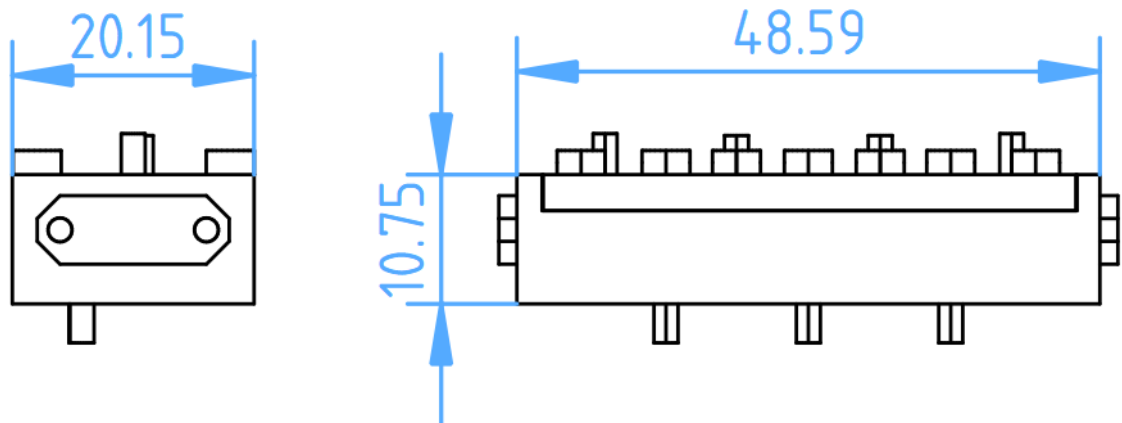
Technology	<i>Machined</i>	
Frequency (f_0)	16.20	[GHz]
Bandwidth	2.00	[GHz]
Insertion Loss	≤ -0.75	[dB]
Return Loss	≤ -13	[dB]
Rejected band (f_L)	[DC – 13.5]	[GHz]
Rejection (Low)	-60	[dB]
Rejected band (f_H)	[18 – 30]	[GHz]
Rejection (High)	-35	[dB]
Impedance	50	[Ω]
Connector	SMA – F	–



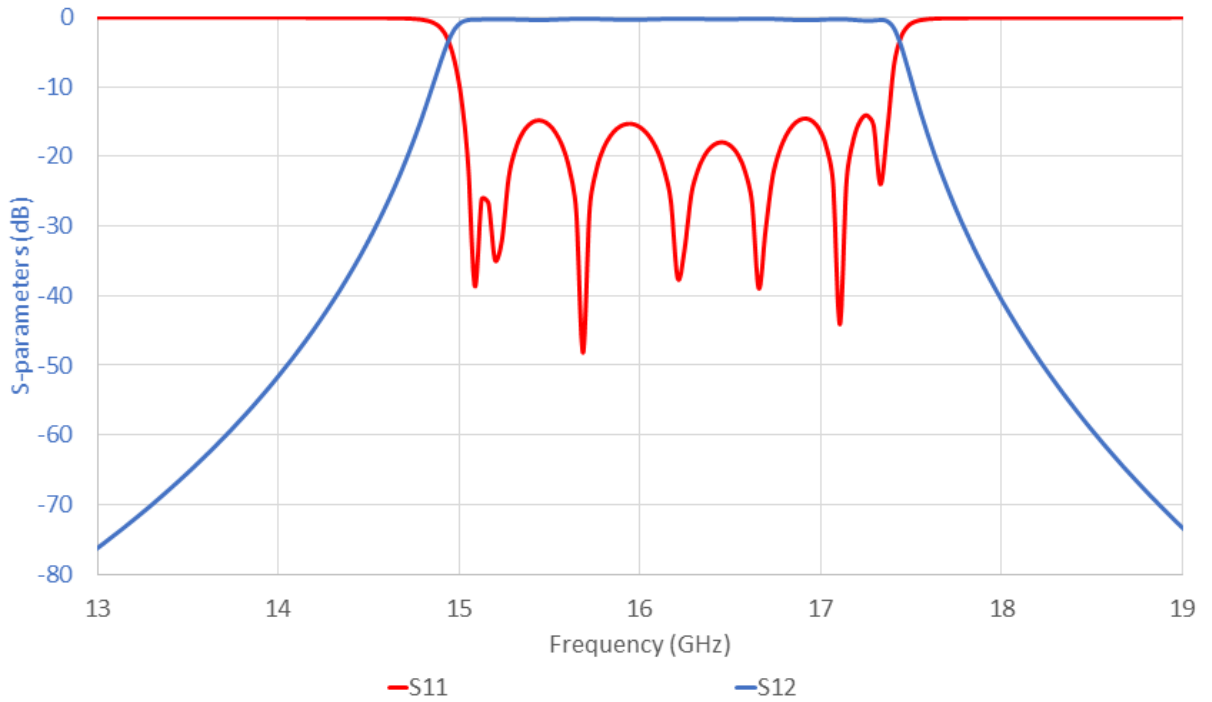
Physical specifications

W x L x H	20.15 x 48.59 x 10.75	[mm ³]
Weight	–	[g]

Technical Drawing



In Band Response



Out Of Band Response

